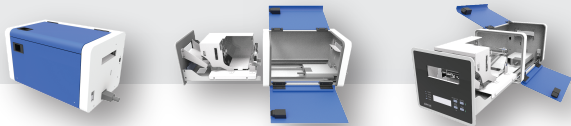
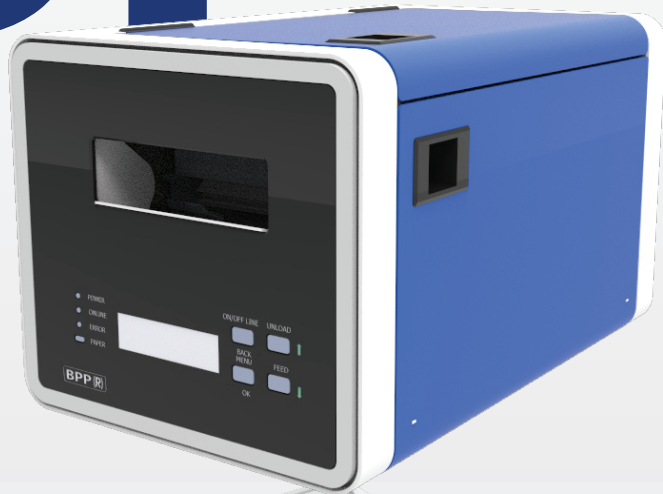


U-TP5000C 탑승권 프린터 Baggage Pass Printer

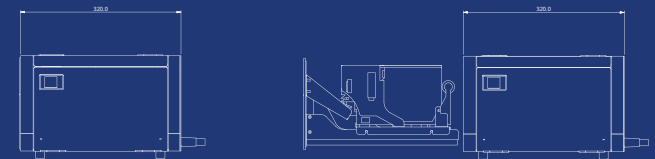
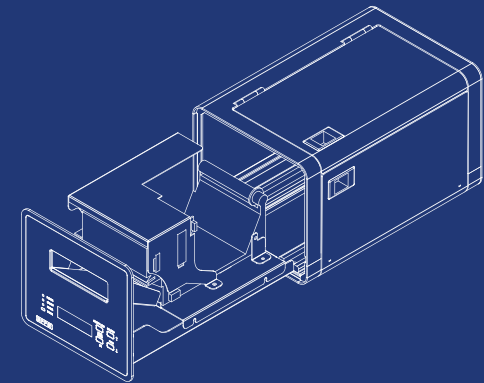
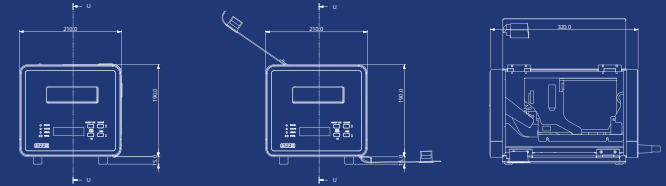
BP



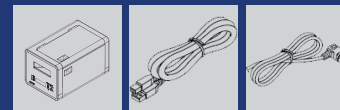
kpc
KAB-QC-04



U-TP5000C [BP]

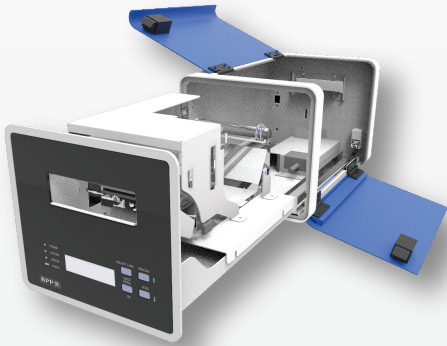


■ 제품 구성품



urielsoft

탑승권 프린터 (Baggage Pass Printer)



U-TP5000C BP는 감열 Line Dot 방식을 적용하여 고속인자가 가능한 Line Thermal Unit 프린터입니다. 체크인 카운터에서 차지하는 공간을 줄이기 위해 부피를 최소화한 소형 프린터로, 이동이 용이하며 공간의 효율성 향상 및 발권 대기 시간을 획기적으로 줄인 장비입니다.

공항 내 카운터 업무의
효율화 및 경제적인 가격

신형 플랫폼과의
완벽한 연동 서비스
지원 환경 제공

사용자 편의성에 충실한
새로운 업무 환경 조성

우수한 품질을 바탕으로
유지보수 비용 절감

U-TP5000C [BP]

PRINT METHOD	Direct line thermal	
SUPPORTED COMMANDS	AEA2009	
CERTIFICATION	CUPPS TS (Compatible)	
PRINT FONT	Alphanumeric characters	95 characters
	Extended graphics	128 × 30 pages
	International characters	16 sets
	RESOLUTION	203dpi
IATA Res.	722	
RELIABILITY-CONSUMABLES	300,000 passes or 100,000 cuts (auto-cutter)	
CHARACTER STRUCTURES	5cpi, 10cpi, 17cpi	
	Template	Arbitrary width (cpi)
PRINT SPEED	Selectable: 150mm (5.9inch)/sec, 200mm (7.8inch)/sec, 250mm (9.8inch)/sec	
BARCODE	Interleaved 2 of 5, Industrial 2 of 5, Code 39, Code 128, EAN 13	
TWO-DIMENSIONAL SYMBOL	PDF417, QR code, Aztec, Datamatrix	
INTERFACES	USB	
AUTO CUTTER	Full cut (scissor-type with separated blades)	
PAPER	Width	82.5 ± 0.5mm or 79.5 ± 0.5mm
	Length	203.2mm or 187.3mm
	Thickness	76 to 200µm
POWER CONSUMPTION	Stand-by power	Below 3W
	Boarding pass	Mean approx. 20W
OPERATING TEMPERATURE	5 to 45°C (storage -25 to 50°C)	
RELIABILITY - PRINTER	Printer life	5 years or 100km
	(excluding printer mechanism, print head and auto-cutter)	
	MTBF	360,000 hours
MCBF	70 million lines	
OVERALL DIMENSIONS	210 (W) × 320 (D) × 205 (H)mm	
WEIGHT Approx.	Approx.11kg	

urielsoft | 주 우리엘소프트

서울시 강서구 양천로 401, 강서한강자이타워 B동 1105호

Tel. 02.2638.5733 Fax. 02.2638.5734 E-mail. master@urielsoft.co.kr www.urielsoft.co.kr